



Lower Moutere School



SCHOOL ROAD, LOWER MOUTERE
www.lowermoutere.school.nz ~ office@lowermoutere.school.nz
ph.526 7775 Absentee txt 027 3398801

Kiaora to families and friends of Lower Moutere School –

7 December 2016

The end of the school year is all but over! Christmas certainly is an exciting time of the year and the buzzy-vibe that is throughout the whole school is incredibly evident! Working with children keeps the spirit of Christmas very much alive!!



There is lots of information here regarding the end of the year and school re-opening next year!

~ VOLUNTEERS AFTERNOON TEA! ~

We wish to extend an invitation to our parent community, to an afternoon tea this FRIDAY – 1.30pm, in the staffroom. This is our chance to say THANKS! For all you have done for the school over the year, and to enjoy some Christmas treats – on us! Please RSVP to the office, to ensure we have plenty to go round!!

~ END OF YEAR CONCERT ~



A reminder that the end of year concert is WEDNESDAY 14 December – **Lower Moutere Memorial Hall** – starting at 7pm. We ask that students are at the hall no later than 6.30pm.

We envisage the evening being approximately 1.5 hours. The order of events for the evening will be as follows:

- ☆ Student performance
- ☆ Speech and prize giving
- ☆ Christmas songs

At the conclusion of the concert, all students will be taken outside to the rear of the hall, where school reports will be given. Parents are asked to collect students from there. The last day of school is Thursday 15 December. School will close at 12.00. There will be no buses running on the Thursday.

There will be a matinee on the Tuesday, starting at 11am if you are unable to attend on the Wednesday, however there will not be any prize giving.

~ MARKET DAY ~

The recent market day was a real celebration of the learning that has happened at our school over the past term. It certainly brought our creative and innovative minds to the forefront and gave our students first-hand experience at design and marketing, and then selling goods to a willing crowd. Thanks to the parents and friends of the school for supporting us over the term and making the afternoon a success. The funds raised from this venture will go towards sports gear ... the long list has been accumulated and the order being made!



STUDENT ACHIEVEMENT- 2016!

Each year, our school sets targets for student achievement. The end of year means a large amount of moderation across the school and teachers using assessment data to establish teacher judgements against the National Standards. I am very pleased to report the following information...

	Well Below standard%	Below standard %	At standard %	Above standard %
Maths	4%	18%	52%	25%
Reading	1%	9%	35%	55%
Writing	3%	18%	62%	17%

This is great achievement for the year ... we can celebrate the high levels of progress that students at our school are making!



~ STAFFING - 2017 ~

Staffing for 2017 - we have one new face joining our staff next year ... here is how are classes are looking!

Room 8 - Mrs Parfitt Year 7&8

Room 7 - Mr Fitzsimmons Year 6 & 7

Room 6 - Mr Lynch Year 4 & 5

Room 4 - Mrs Diack & Mr Bascand Year 3 & 4

Room 3 - Mrs Sinclair & Mrs Mali - Year 2 & 3

Room 2 - Mrs Smith

Room 1 - Mrs Wilkinson

Special Needs teacher - Mrs Robinson

Release teacher - Ms Stephens

Reading Recovery - Mrs Sinclair

We welcome Mrs Shena Mali to the staff, who will work in Room 3, releasing Mrs Sinclair.



FIFESHIRE FOUNDATION BIG GIVE!

We have a large number of gifts and food items under the tree ...many thanks to those who have been able to give to this great cause. We thank you and look forward to handing these on to those in need. As part of the BIG GIVE, we look forward to More FM entertaining us on Tuesday 13 Dec, over our lunchtime!



Win a ride in a Lamborghini!

This week, one very fortunate student from our school is going to win a trip in a Lamborghini ... thanks to the great team at the Waimea Testing station who have arranged this exciting event for us!

SCHOOL UNIFORM survey...

The Board of Trustees have been reviewing the current policy on school uniform. They wish to seek further feedback about the school shirt that we currently have, and ask that this feedback comes to us via Survey Monkey. Below is the link for families to use... please copy and paste into your browser and complete the 3 questions, online! Responses close next Monday. Many thanks.

<https://www.surveymonkey.com/r/3MDSNP2>

This is our last newsletter for the school year. On behalf of the staff of the school, we wish to thank our parents and wider community, for all the support given towards the school and our students over the year. It has certainly been an eventful year with many great accomplishments made!

To the staff of the school, thank you for the incredible efforts and lengths that you all go to, to ensure that our students are happy and achieving. We have a great school, and the efforts of the team certainly ensure that we aspire to 'be the best that we can be'. To our families who are moving on from our school, we thank you for all you have given to our school, and wish you well with new ventures. To our Year 8 students graduating to Motueka High School, the school community wishes you every success as you take the next big step in your schooling life!

Enjoy the break ahead. We trust the weeks will be filled with laughter, sunshine, family and great friends! All the best for the festive season, and kind wishes for the New Year!

Chris Bascand - Principal



Stars of the Week



Thank you to the following supporters of our school throughout 2016:

Fonterra for supplying milk for breakfast club and the milk in schools program
Motueka New World - Gift Cards used for breakfast club supplies - bread & spreads
Sanitarium - Weetbix for breakfast club
Lower Moutere Store
Tasman District Council (\$1000 Swimming Pool Subsidy)
Pub Charity (\$2652 Grant for Classroom Furniture for Rooms 3 & 4)
Riverside Community Trust Board (\$100 Breakfast Club)
Lion Foundation (\$3000 Readers for Juniors)
Tasman District Council (\$1150 School Fun Run/Walk)

Our thanks go out to Catherine and Steve from Omega Design for the mural that we now proudly have displayed by Room 3! The art is a culmination of the three winning photos from the competition earlier in the year!

Maths Corner

Always, Sometimes or Never? KS1

Stage: 1 ★

Are the following statements about number always true, sometimes true or never true?

How do you know?

When you add two numbers you can change the order and the answer will be the same	If you add 10 and take away 1 it is the same as adding 9
When you add 10 to a number the answer is a multiple of 10	When you subtract one number from another number you can change the order and the answer will be the same.



Huge thanks to June Smith for offering to launder & repair our school library bags - vet again!!!

Discuss these with your child. There's more at <http://nrich.maths.org/12671>

Try an Inspirational Maths course, free, through Harvard University. A great holiday activity to do with your child/ren. Go to <https://lagunita.stanford.edu/courses/Education/EDUC115-S/Spring2014/about> to register!

Dates for the diary....

DECEMBER	
Thursday 8 th	Lower School Fundraising Group Meeting - 3pm in the quad area
Thursday 8 th	Year 8 Students Graduation Evening
Friday 9 th	Volunteers Afternoon Tea 1.30pm
Wednesday 14 th	End of Year Concert - Lower Moutere Memorial Hall 7pm (reports handed out)
Thursday 15 th	Last day of term 4 - 12 noon finish - no buses
JANUARY 2017	
Wednesday 25 th <u>and</u> Friday 27 th	School Office - Open for stationery sales & new enrolments
FEBRUARY	
Wednesday 1 st	First Day Term 1

Term Dates for 2017

Term 1	Wednesday 1 February	To	Thursday 13 April
Term 2	Monday 1 May	To	Friday 7 July
Term 3	Monday 24 July	To	Friday 29 September
Term 4	Monday 16 October	To	Friday 15 December

NOTICES



School Pool Key Hire



Pool keys are now available from the school office.

The cost is \$50 per school family or \$70 for non-school families.

A pool users agreement must be completed before a key will be issued.

Community Oral Health Service

Did you know?



- That the **Community Oral Health Service** is open 8am-5pm Mon-Fri for 50 weeks a year.
- All the **clinics will be operating** over the summer school holidays.
- Clinics will **only be closed** from Fri 23rd Dec 2016 until they reopen on Mon 9th Jan 2017.
- For any urgent dental care during that time, parents should **contact a contracting dentist** in their community.
- It is also a time to remind each other about **'keeping our teeth safe'** over summer by limiting our sugary food, drinking water and brushing twice a day with fluoride toothpaste.

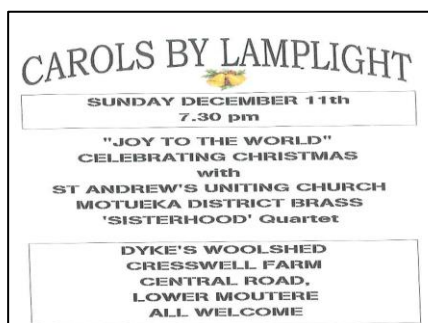
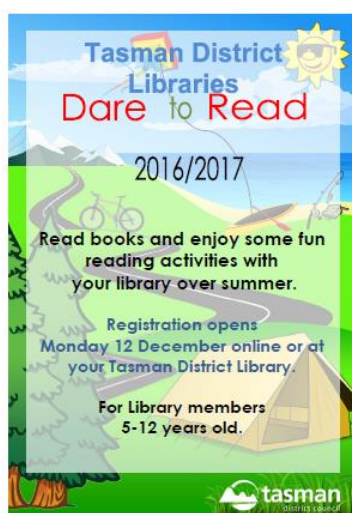
Best wishes from ALL the COHS staff for a happy, healthy, **tooth friendly** summer holiday.

0800 TALK TEETH – 0800 825 583

MOTUEKA & TASMAN MOBILE CLINIC 528 1160 X7.

School Office Hours

The office will close for the year at 12.00pm on Wednesday 14th December, and will re-open for stationery sales and new enrolments on Wednesday 25th and Friday 27th January between 9.30am and 3pm, prior to the new 2016 school year commencing on Wednesday 1st February.



25th March Motueka Club 2pm



SUMMER CAMPS AT BRIDGE VALLEY

Looking for something to do this summer holidays? Here at Bridge Valley Adventure Centre we have our 'Beached az' holiday camps! That's right, we're going kiwiana style out here while enjoying the summer sunshine.

With a wide range of activities such as off-roaders, shooting, kayaking, the aqua tramp, archery, the hydroslide and many others, we're set for an exciting few weeks!

Junior camp from the 9th- 13th of January (Ages 8 – 10)

Intermediate camp from the 16th – 20th of January (Ages 11-13)

Family camp from the 3rd – 7th of January (All ages)

Don't forget that WINZ subsidies are available.

The staff here at Bridge Valley are looking forward to seeing you again, or meeting you for the first time! For more information and to sign up go to our website at www.bridgevalley.co.nz



SHOHEI-RYU KARATE CLUB - LOWER MOUTERE MEMORIAL HALL

We would like to invite you to train with us again during school Term 1. The class is aimed at children from about 5 years of age and upwards and is held on Tuesdays between 3.30 p.m. and 4.30 p.m.. Classes will be held from the 7th February 2017. Beginners in Karate are made welcome, please wear loose clothing. Further details of the Lower Moutere club and other clubs in the area, you can contact

Paul.Email: paul.natzyl@shohei-ryukarate.com

Web: shohei-ryukarate.com